

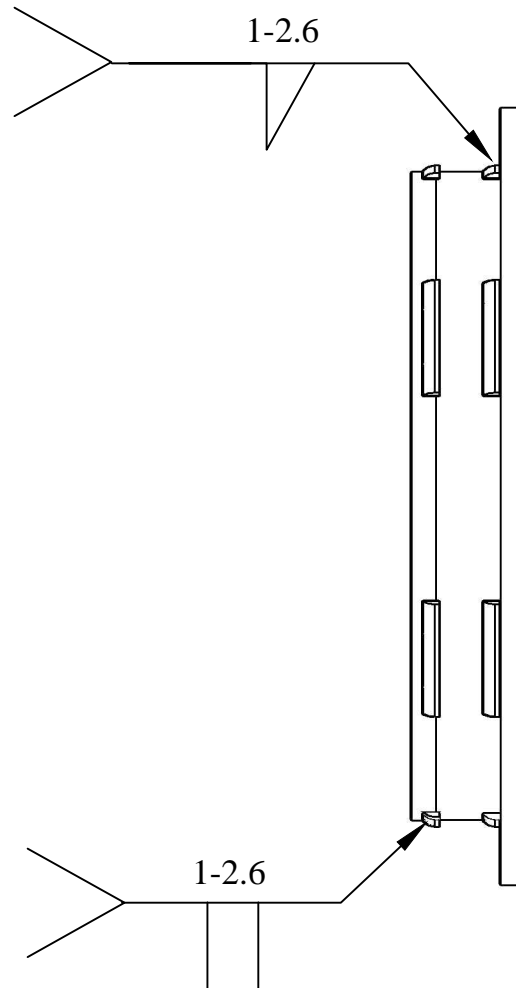
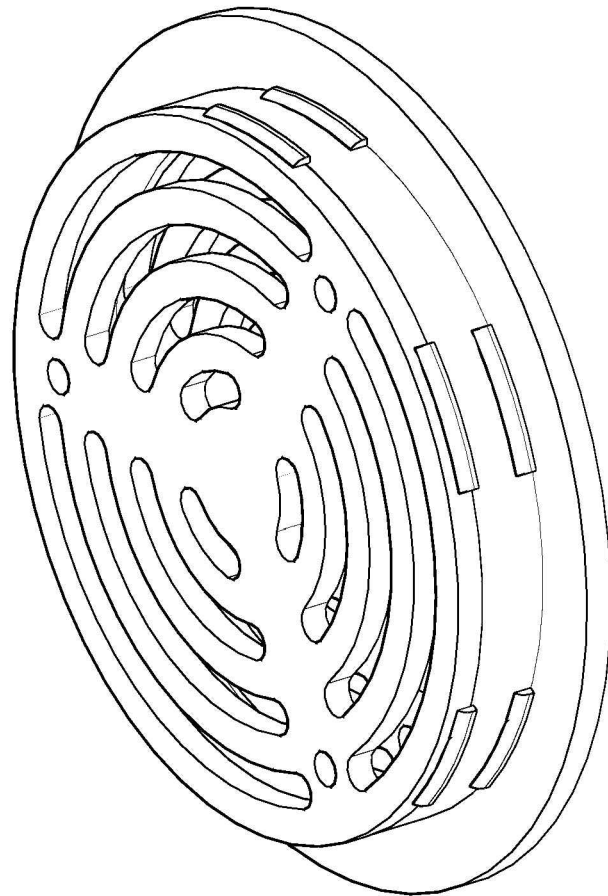
General Notes

Overall Dimension

6"Ø x 1-3/4" (D)
(Excluding Spacers (3) & the
Steel Plate (2).

NOTE:

1. Transform the 16 ga., 14-13/16 x 1/2 stainless steel plate into a 5"Ø spacer.
2. Set the spacer in between the inner and outer 3/16 stainless plates.
3. Connect the 3 parts by welding approx. 1" length of welds at a pitch of about 2.6" (center to center distance)



QUIKSERV

11441 BRITTMOORE PARK DR.
HOUSTON, TX., 77041

TITLE:

BULLET RESISTANT SPEAK THRU

Drawing Name

INTERIOR & EXTERIOR PARTS

DATE

10/10/2016

DRAWN BY

RBV

SCALE

NTS

SHEET

2 of 2

SIZE

A

NOTE: THIS DRAWING EMBODIES A CONFIDENTIAL PROPRIETY DESIGN ORIGINATED AND OWNED BY QUIKSERV CORP., AND IS SUBMITTED UNDER A CONFIDENTIAL RELATIONS ALL PATENT, MANUFACTURING, SALE RIGHTS REGARDING THE SAME ARE RESERVED EXCEPT TO THE EXTENT RIGHTS ARE EXPRESSLY GRANTED TO OTHERS. THE RECIPIENT AGREES BY ACCEPTING HIP. THESE DRAWINGS NOT TO SUPPLY OR DISCLOSE ANY INFORMATION REGARDING THEM TO ANY UNAUTHORIZED PERSON.