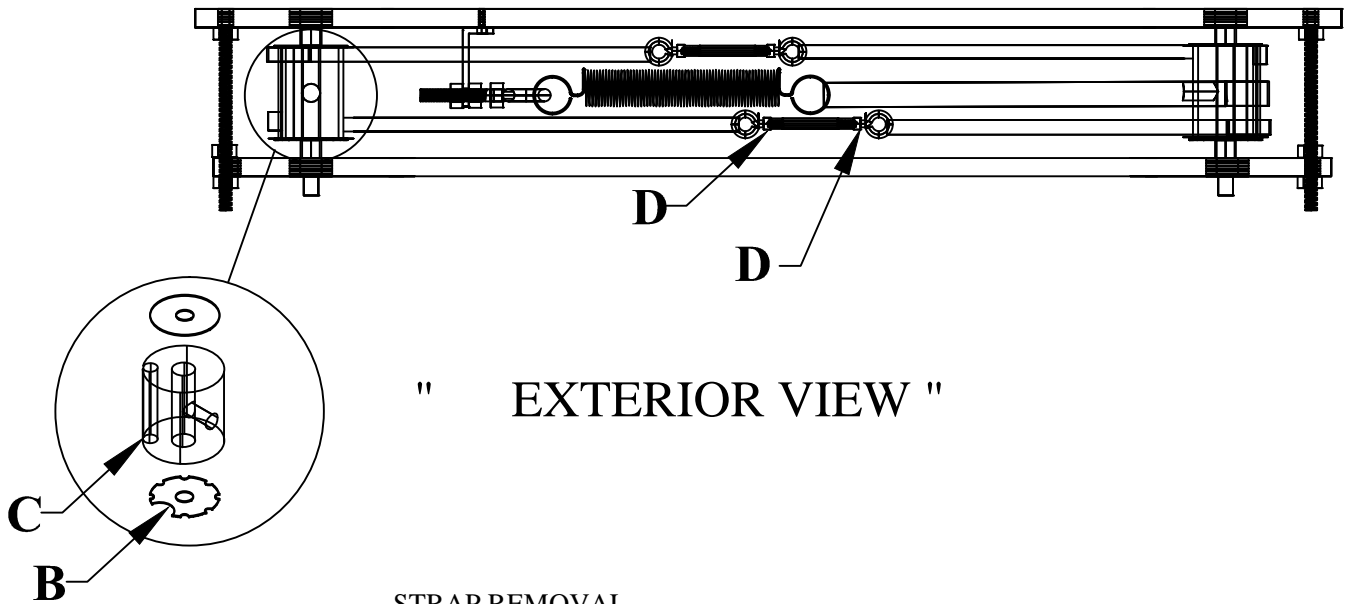


STRAP REPLACEMENT



STRAP REMOVAL

1. Remove the screws from the front exterior access cover.
Set access cover aside.
2. Turn bottom retainer washer (B) on bottom of roller (C) with a screw driver until you line up the large hole.
3. Loosen 7/16 nuts on both sides of bottom turnbuckle (D).
4. Slide the bottom belt out the bottom of the roller (C).
5. Remove the remaining straps in the same way as bottom strap.

STRAP REPLACEMENT

1. Install new straps in reverse order that the defective strap was removed.
2. Take new strap and install a new roller pin in the loop at the end of the strap.
3. Slide new strap into bottom of roller and slide into correct order.
4. Tighten straps by turning adjuster body while holding eyebolts.
5. Tighten in sequence- a little at a time until strap is taut and both doors are aligned in the closed position.
6. After final adjustments apply lock tight and tighten hex nuts.
7. Adjust retainer washers so straps will not come out and replace access cover.

TOOLS NEEDED

- Phillips Screw Driver
- (2) 7/16" Wrench
- Lock Tight -Thread lock
- Small pliers or vise grips

NOTE: THIS DRAWING EMBODIES A CONFIDENTIAL PROPRIETARY DESIGN ORIGINATED AND OWED BY QUIKSERV CORP., AND IS SUBMITTED UNDER A CONFIDENTIAL RELATIONSHIP. ALL PATENT, MANUFACTURING, SALE RIGHTS REGARDING THE SAME ARE RESERVED EXCEPT TO THE EXTENT RIGHTS ARE EXPRESSLY GRANTED TO OTHERS. THE RECIPIENT AGREES BY ACCEPTING THESE DRAWINGS NOT TO SUPPLY OR DISCLOSE ANY INFORMATION REGARDING THEM TO ANY UNAUTHORIZED PERSON.

Quikserv Corp.
www.quikserv.com
1-800-388-8307

STRAP REPLACEMENT BI-FOLDS

Submitted By:

Brian Coble

DATE:

8/18/2015

Sheet:

BF-SR