

**TYPICAL
SCT-4860 INSTALLATION**

- 1) Quikserv windows must be installed level and square to work properly.
- 2) Anchor through each side jamb at three places approx. 5" at top and bottom as well as the middle of each jamb. (See Figure 1)
- 4) Recommended height from floor to service opening to be 36". (Check any and all local or city codes)
- 5) Silicone all exterior and interior joints.
- 6) All other type of anchoring to be approved by certified engineer.

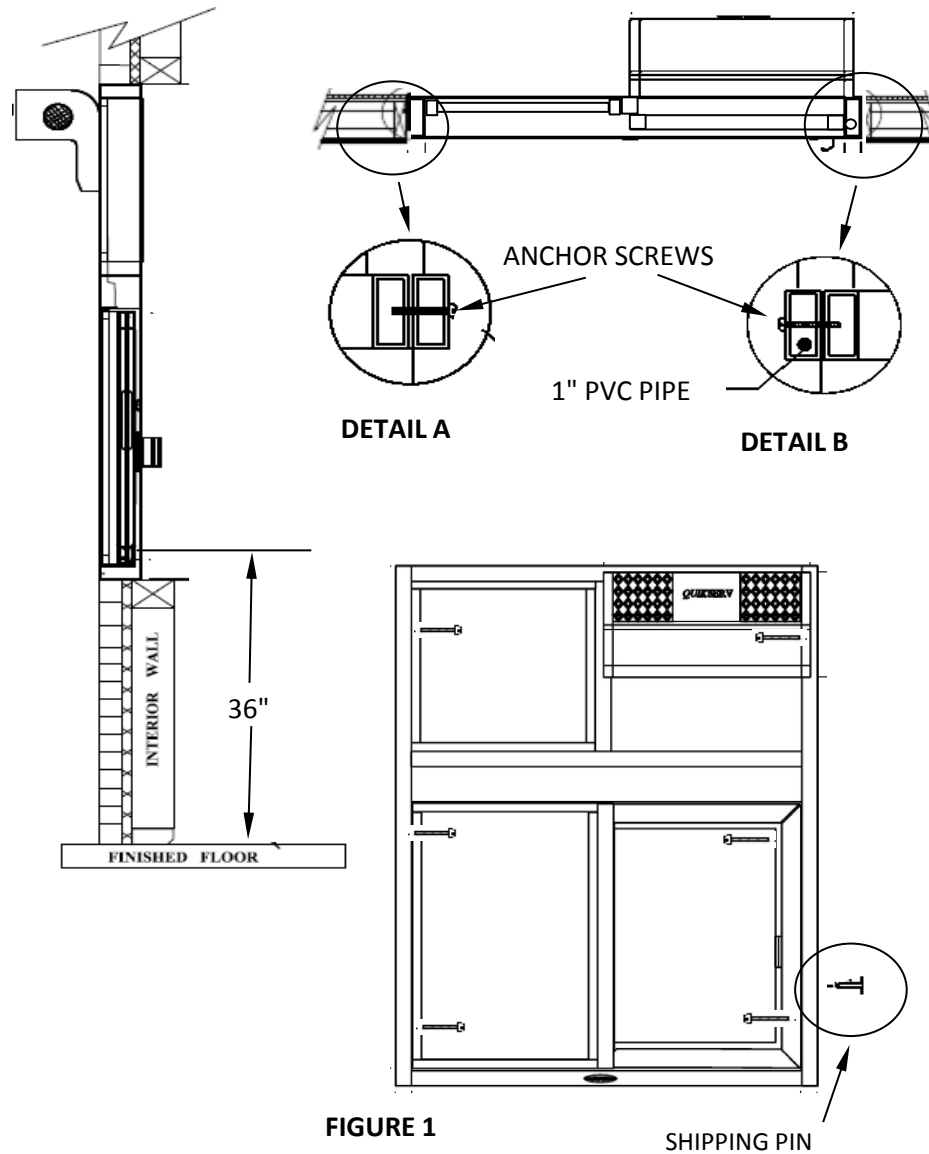


FIGURE 1

SHIPPING PIN

General Notes

Actual Dimension
47-1/2"(W) x 59-1/2"(H)

Service Opening
20-1/4"(W) x 29-1/2"(H)

Rough Opening
48"(W) x 60"(H)

NOTE 1:
Anchor Screws to be supplied by contractor (See Detail A)

NOTE 2:
Remove shipping pin before installing the window. The shipping pin is located in the side jamb. (See Figure 1)

CAUTION:
Use caution when drilling thru the side jamb. A 1" pvc tube is located inside the side jamb. Drilling into 1" pvc tube will void warranty.

QUIKSERV
11441 BRITTMOORE PARK DR.
HOUSTON, TX., 77041

NOTE: THIS DRAWING EMBODIES A CONFIDENTIAL PROPRIETY DESIGN ORIGINATED AND OWNED BY QUIKSERV CORP., AND IS SUBMITTED UNDER A CONFIDENTIAL RELATIONS ALL PATENT, MANUFACTURING, SALE RIGHTS REGARDING THE SAME ARE RESERVED EXCEPT TO THE EXTENT RIGHTS ARE EXPRESSLY GRANTED TO OTHERS. THE RECIPIENT AGREES BY ACCEPTING HIP. THESE DRAWINGS NOT TO SUPPLY OR DISCLOSE ANY INFORMATION REGARDING THEM TO ANY UNAUTHORIZED PERSON.

TITLE: INSTALLATION PROCEDURE				
Drawing Name SCT-4860 INSTALLATION DRAWING				
DATE	DRAWN BY	SCALE	SHEET	SIZE
4/14/2016	RBV	NTS	1 of 1	A