

## TYPICAL FM-42E INSTALLATION

- 1) Quikserv windows must be installed level and square to work properly.
- 2) Anchor through each side jamb at two places approx. 5" at top and bottom of each jamb. (See Fig. 1)
- 3) 115V / 15 Amp. Dedicated circuit required.
- 4) Recommended height from floor to service opening to be 36". (Check all local and city codes)
- 5) Silicone all exterior and interior joints
- 6) All other type of anchoring to be approved by certified engineer.

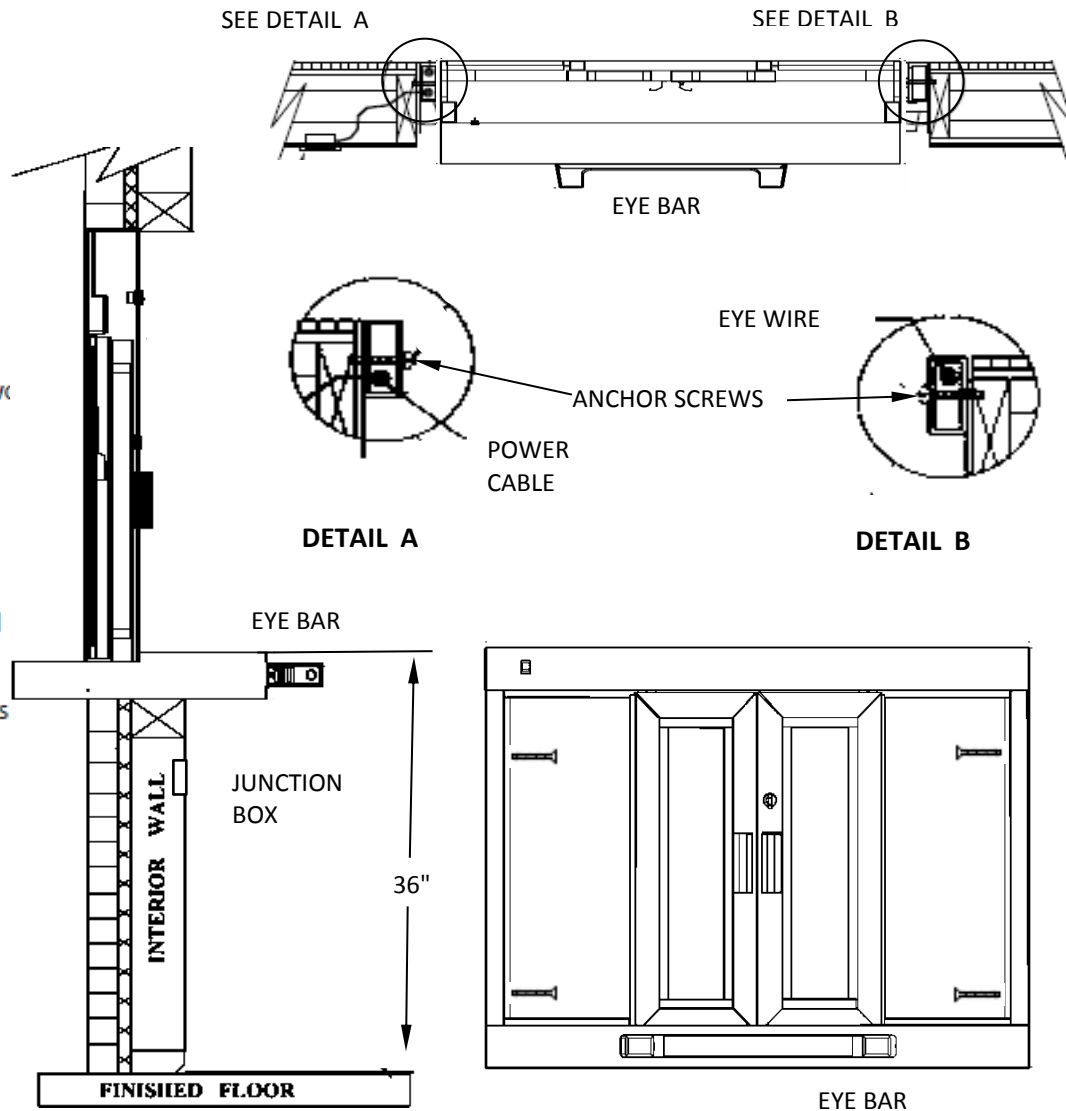


FIGURE 1

## General Notes

**Actual Dimension**  
42"(W) x 40"(H)

**Service Opening**  
15-1/2"(W) x 27"(H)

**Rough Opening**  
42-1/2"(W) x 40-1/2"(H)

**NOTE 1:**  
Anchor Screws to be supplied by contractor.

**NOTE 2:**  
The junction box for power supply to be supplied by contractor.

**CAUTION:**  
Use caution when drilling. The power supply cable is located in the left hand jamb. Eye wire is located in the right hand jamb.

**QUIKSERV**  
11441 BRITTMORE PARK DR.  
HOUSTON, TX., 77041

TITLE: <b>INSTALLATION PROCEDURE</b>				
Drawing Name <b>FM-42E INSTALLATION DRAWING</b>				
DATE 3/28/2016	DRAWN BY RBV	SCALE NTS	SHEET 1 of 1	SIZE <b>A</b>

NOTE: THIS DRAWING EMBODIES A CONFIDENTIAL PROPRIETY DESIGN ORIGINATED AND OWNED BY QUIKSERV CORP., AND IS SUBMITTED UNDER A CONFIDENTIAL RELATIONS ALL PATENT, MANUFACTURING, SALE RIGHTS REGARDING THE SAME ARE RESERVED EXCEPT TO THE EXTENT RIGHTS ARE EXPRESSLY GRANTED TO OTHERS. THE RECIPIENT AGREES BY ACCEPTING HIP. THESE DRAWINGS NOT TO SUPPLY OR DISCLOSE ANY INFORMATION REGARDING THEM TO ANY UNAUTHORIZED PERSON.