

General Notes

Actual Dimension
72"(W) x 52"(H)

Dual Service Opening
29-1/2"(W) x 30"(H)
15"(W) x 30"(H)

Rough Opening
72-1/2"(W) x 52-1/2"(H)

NOTE 1:
Anchor screws to be supplied by contractor.

NOTE 2:
Eye set to be mounted directly below the service opening. Bar to be mounted on the wall.

NOTE 3:
The junction box for power supply to be supplied by contractor.

CAUTION:
Use caution when drilling. The power supply cable and the eye bar cable are located in the left hand jamb.

QUIKSERV
11441 BRITTMOORE PARK DR.
HOUSTON, TX., 77041

TYPICAL BP-7252E INSTALLATION

- 1) Quikserv windows must be installed level and square to work properly.
- 2) Anchor through each side jamb at two places approx. "5" at top and bottom of each jamb. (See Fig. 1)
- 3) Ensure to drill in between the eye wire and power cable located in the left jamb.
- 4) 115V/15 Amp. dedicated circuit required.
- 5) Recommended height from floor to service opening to be 36". (Check all local and city codes)
- 6) Silicone all external and internal joints.
- 7) All other type of anchoring to be approved by certified engineer.

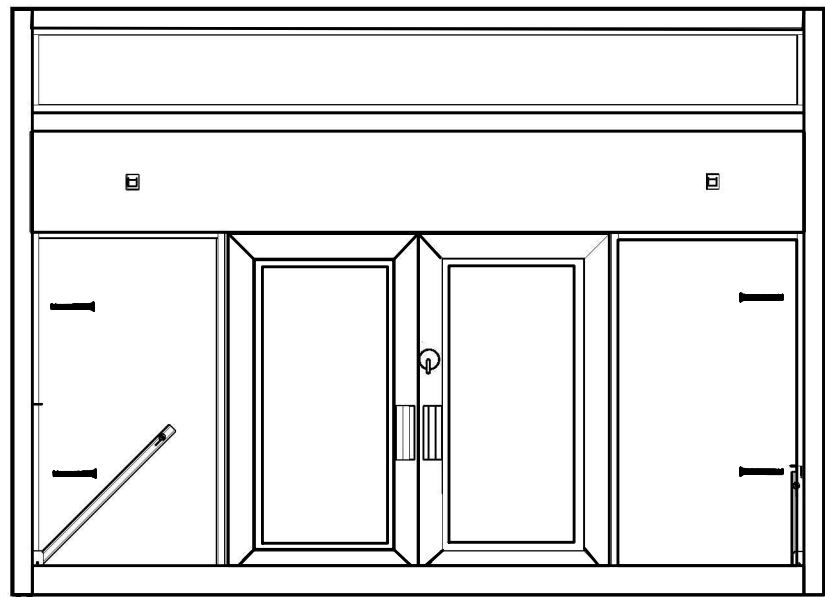
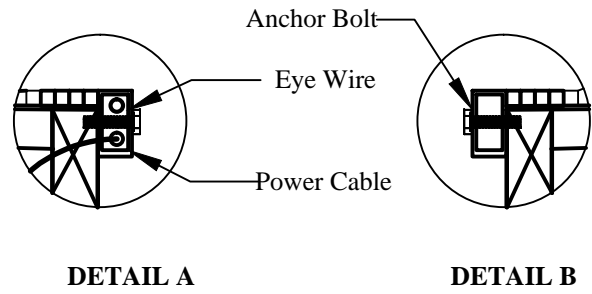
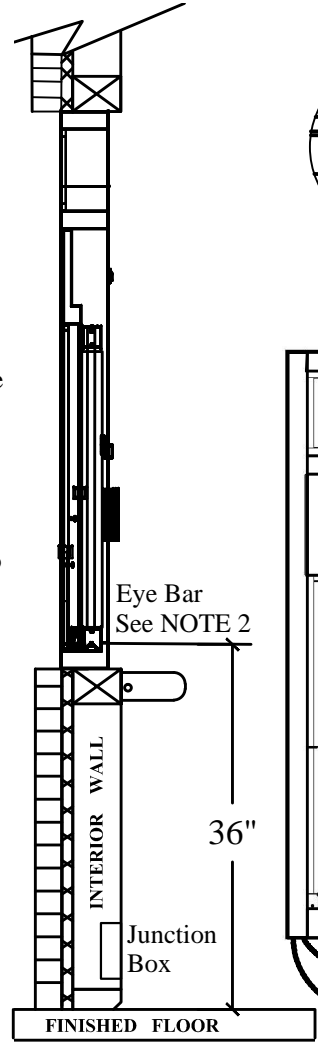


FIGURE 1

NOTE: THIS DRAWING EMBODIES A CONFIDENTIAL PROPRIETY DESIGN ORIGINATED AND OWNED BY QUIKSERV CORP., AND IS SUBMITTED UNDER A CONFIDENTIAL RELATIONS ALL PATENT, MANUFACTURING, SALE RIGHTS REGARDING THE SAME ARE RESERVED EXCEPT TO THE EXTENT RIGHTS ARE EXPRESSLY GRANTED TO OTHERS. THE RECIPIENT AGREES BY ACCEPTING HIP. THESE DRAWINGS NOT TO SUPPLY OR DISCLOSE ANY INFORMATION REGARDING THEM TO ANY UNAUTHORIZED PERSON.

TITLE: DUAL OPENING FULLY AUTOMATIC WINDOW				
Drawing Name BP-7252E INSTALLATION DRAWING				
DATE 3/21/2016	DRAWN BY RBV	SCALE NTS	SHEET 1 of 1	SIZE A